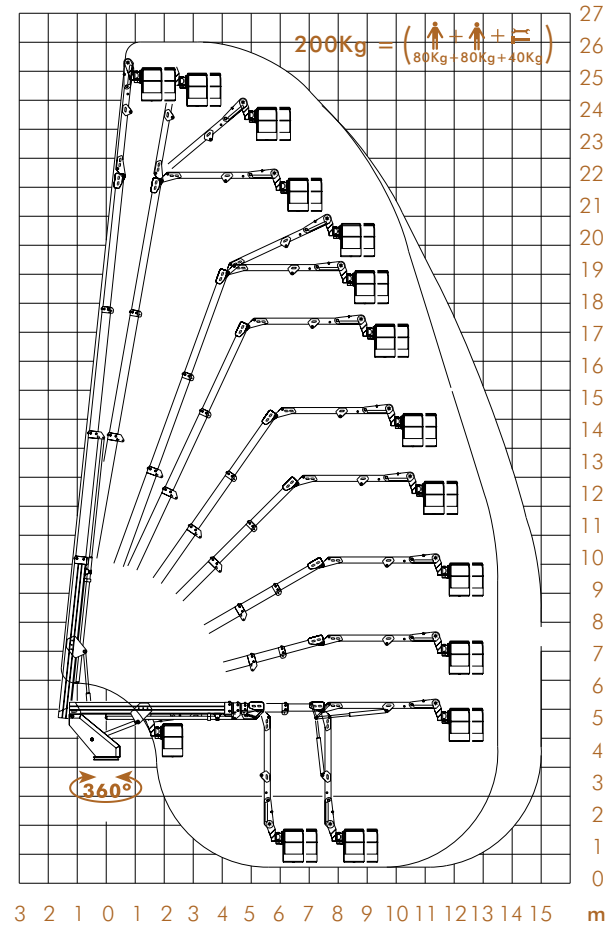




KF 26

12tonne GVW
(Category C driving licence)

26.3M WORKING HEIGHT
UP TO 15.2M WORKING OUTREACH
CONTINUOUS 360° ROTATION
STRAIGHT DOWN JACKING ON
12TONNE GVW



3 2 1 0 1 2 3 4 5 6 7 8 9 10 11 12 13 14 15 m



KF26

12tonne GVW Cat. C

SPECIFICATIONS

Operating Dimensions

Working Height	26.3m
Platform Height	24.3m
Outreach from Centre	
15.2m (120Kg/12tonne)	
13.5m (200Kg/12tonne)	
Outrigger Footprint Width	
3.5m (12tonne)	
Rotation	360° Continuous
Basket Rotation	90° + 90°
Safe Working Load	200Kg
Dimensions	1.8m x 0.7m x 1.1m (H)

Closed Dimensions (transit)

Length	6.7m
Width	(Iveco) 3.2m
Height	3.5m
GVW	7500Kg/12000Kg

Can be mounted on 12tonne GVW chassis and upwards. Iveco is standard, can be mounted on Mercedes, Renault, DAF.

